



DESERT  
**FOX**  
BRANDS

Customizable products  
for golf and beyond.

# DIGITAL PROOFS FOR



Desert Fox Brands includes Desert Fox Golf and Desert Fox Products to create purpose built, innovative products that enhance daily experiences. Our unique products and design support offer the perfect canvas for your brand story and delivered with a customer first mindset to ensure success.

# DJ-10

## WIRELESS GOLF SPEAKER



Great sound in a small package.  
Built from the ground up for customization.

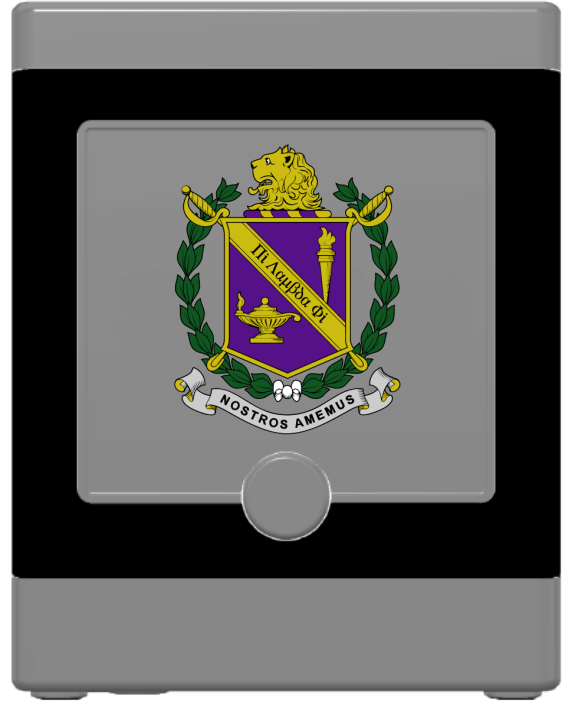
**BUILT BY GOLFERS FOR GOLFERS**

# DJ-10 Speaker

Speaker Box



Speaker



*New Colors Coming in July 2024*

## Speaker Box Details

*Dimensions: 4.1" x 4.3" (W x H)  
Logo Area: 2.5" x 2.5" (W x H)*

## Speaker Details

*Dimensions: 4.1" x 4.3" (W x H)  
Logo Area: 2.2" x 2.1" (W x H)*

# PHONE CADDY

THE BEST PHONE HOLDER FOR GOLF



Patented PhoneFIT™ Technology  
Fits Vast Majority of Smart Phones

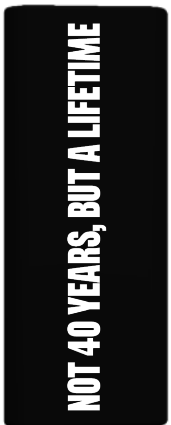
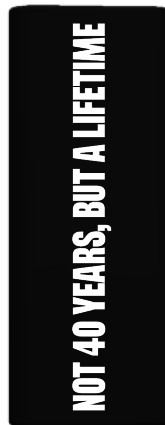
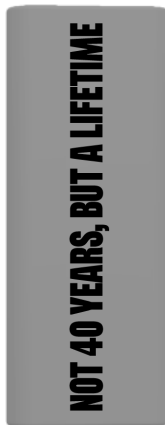
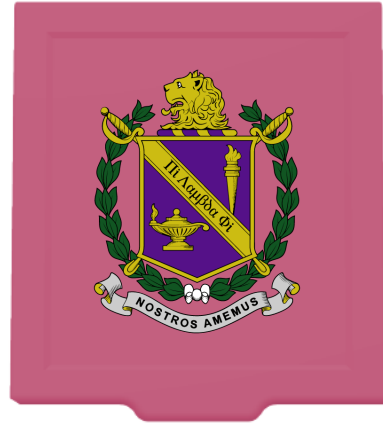
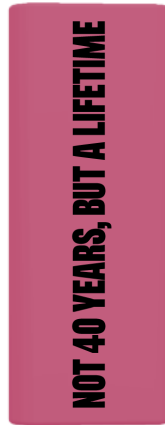
**BUILT BY GOLFERS FOR GOLFERS**

# Phone Caddy

Wing

Faceplate

Wing



## Faceplate Details

Logo Area: 2.1" x 2.3" (W x H)

## Wing Details

Logo Area (x2): 0.8" x 2.75" (W x H)

# Phone Caddy

Packaging Options: Choose One

## Standard Bag

5.9" x 5.9" (W x H)

Logo Matches Phone Caddy Color



## Retail Box

2.9" x 3.5" x 2.5" (W x H x D)

Clear front window



## Custom Bag

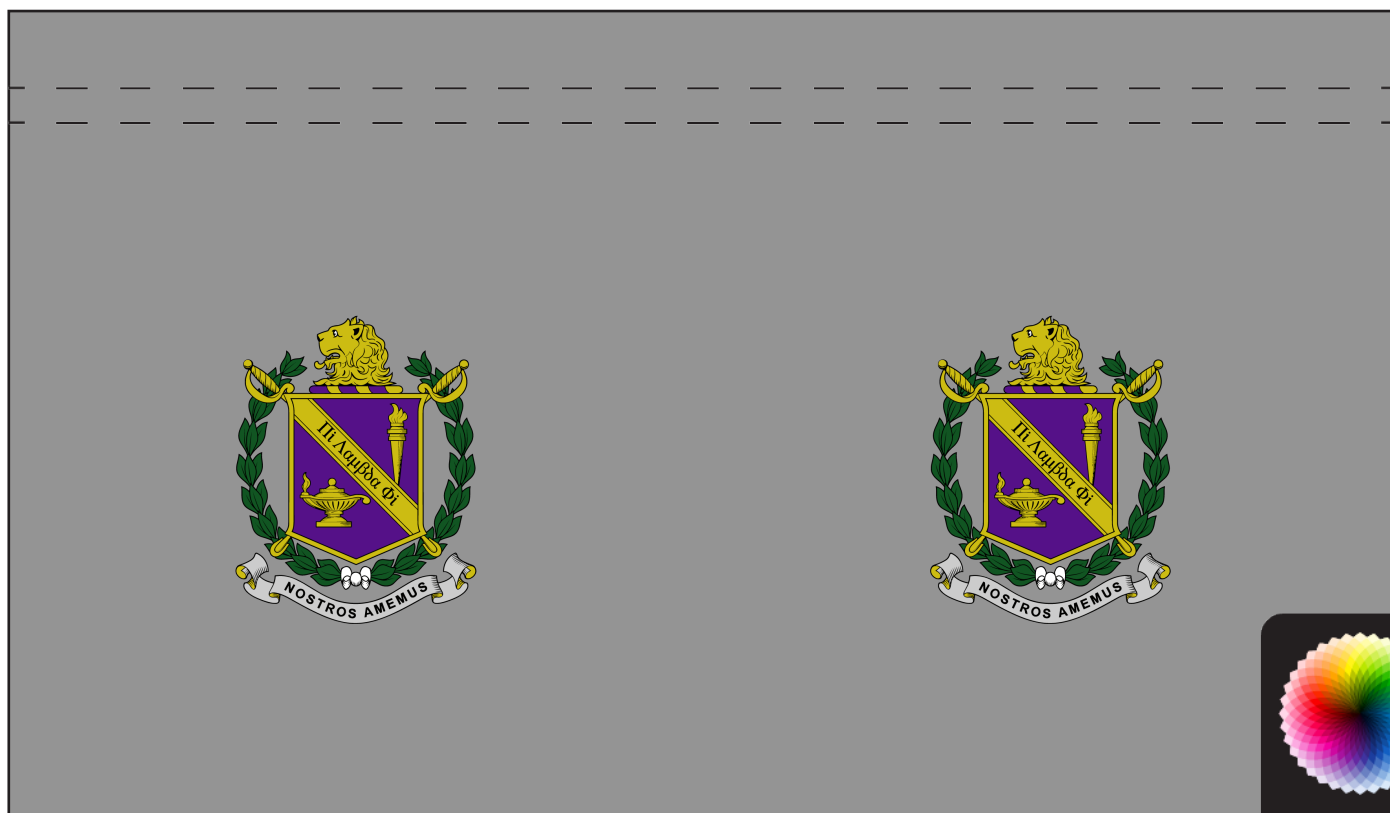
5.9" x 5.9" (W x H)

Logo Area: 4" x 4" (W x H)

Custom Color Available



## Custom Bag



Front

Back



Any Color

# CUSTOM GOLF TOWELS

THE BEST TOWELS FOR GOLF



Cooling Towel

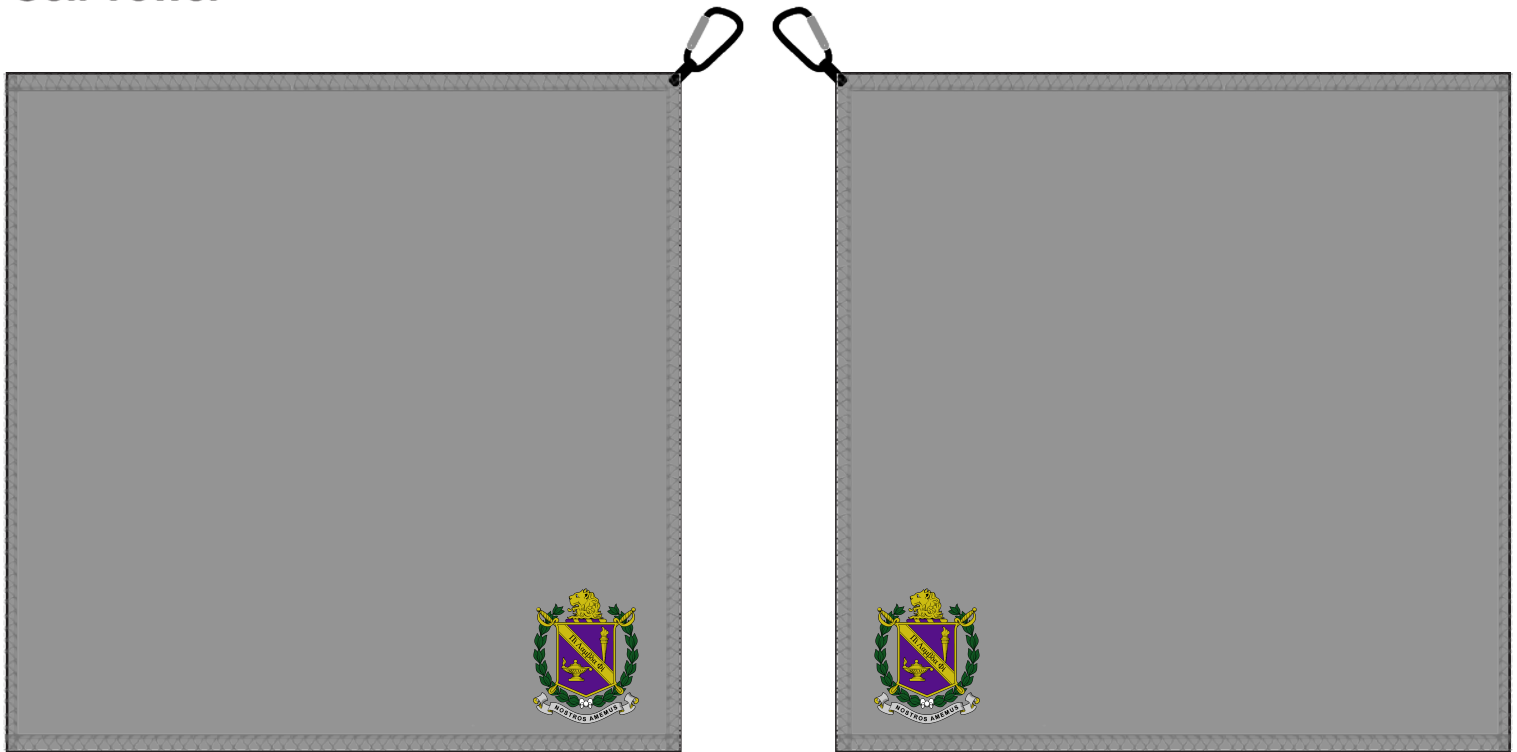
Golf Towel



KEEPING YOU COOL AND YOUR CLUBS CLEAN

# Golf Towel

## Golf Towel



Front

Back

## Golf Towel Details

*Dimensions: 16" x 16" (W x H)*

*Logo Area: 2.1" x 2.3" (W x H)*

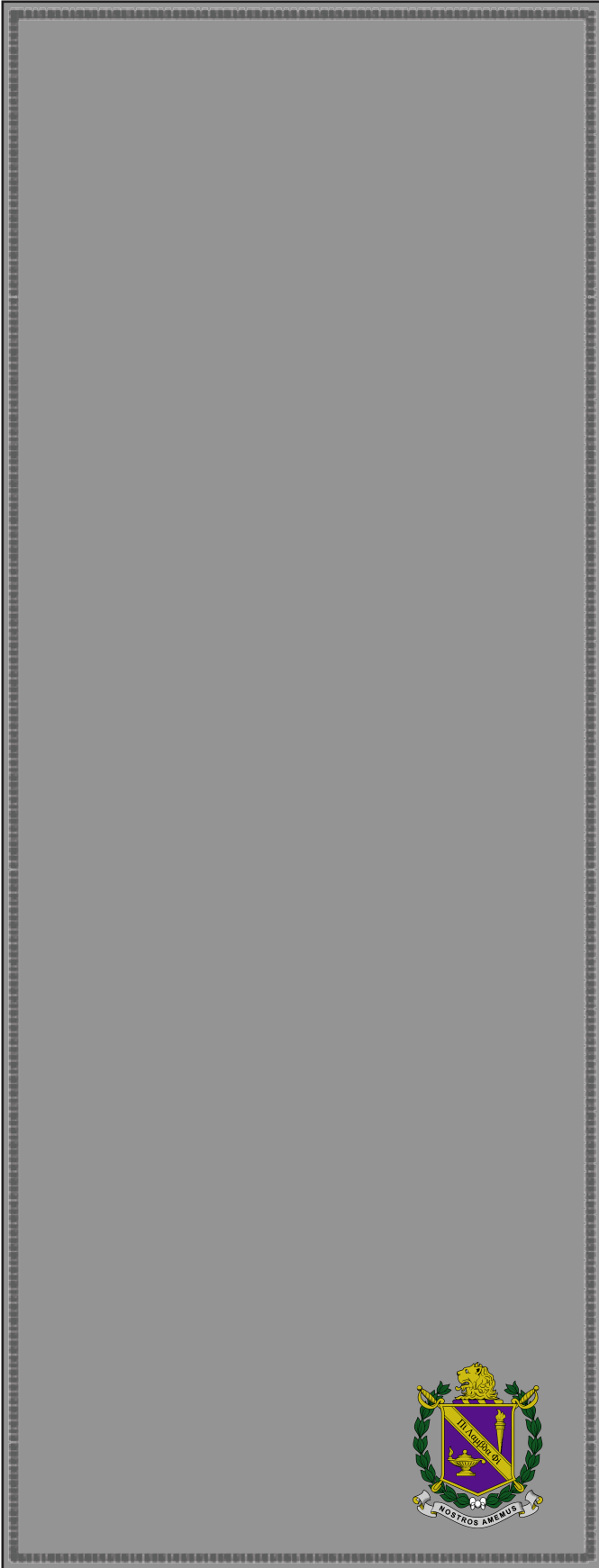
Towel color can be fully customized

Logo is placed on front and back in the corners to optimize viewing when hung from the golf bag.



# Cooling Towel

## Cooling Towel



### Cooling Towel Details

*Dimensions: 11.8" x 31.5" (W x H)*

*Logo Area: 2.1" x 2.3" (W x H)*

Towel color can be fully customized

Logo is placed on lower right corner



# GIFT BOX

ELEVATE YOUR GIFT-GIVING EXPERIENCE



**CUSTOM PRINTED GIFT BOX**

# Custom Gift Box

## Gift Box Artwork



## Gift Box Details

*Dimensions: 8.6" x 7.6" (W x H)*

*Logo Area: 6" x 6" (W x H)*

Standard box color is Gloss White

Size may vary depending on items selected to go into the gift box

Additional custom colors available upon request for additional fee

# DRINKAIDE

KEEP YOUR DRINK COOL IN STYLE



TUMBLERS & CAN COOLERS

# Can Cooler Logo

## Can Cooler Artwork



DESERT FOX GOLF • WWW.DESERTFOXGOLF.COM

## Can Cooler Details

Dimensions: 2.75" x 4.25" (D x H)

Artwork Area: 8.6" x 2.25" (W x H)



Front



Back



Any Color

# Can Cooler Classic

## Can Cooler Artwork



### **AN EXPERIENCE UNLIKE ANY OTHER**

Hey, switch up this text with something cool about your company! This stainless steel can cooler isn't just unique—it's a prime spot to get your message out in a fun, memorable way. Use it to show off what makes your awesome!



## Can Cooler Details

Dimensions: 2.75" x 4.25" (D x H)

Artwork Area: 8.6" x 2.25" (W x H)



Front



Back



# SwingAide Tumbler

## SwingAide Artwork

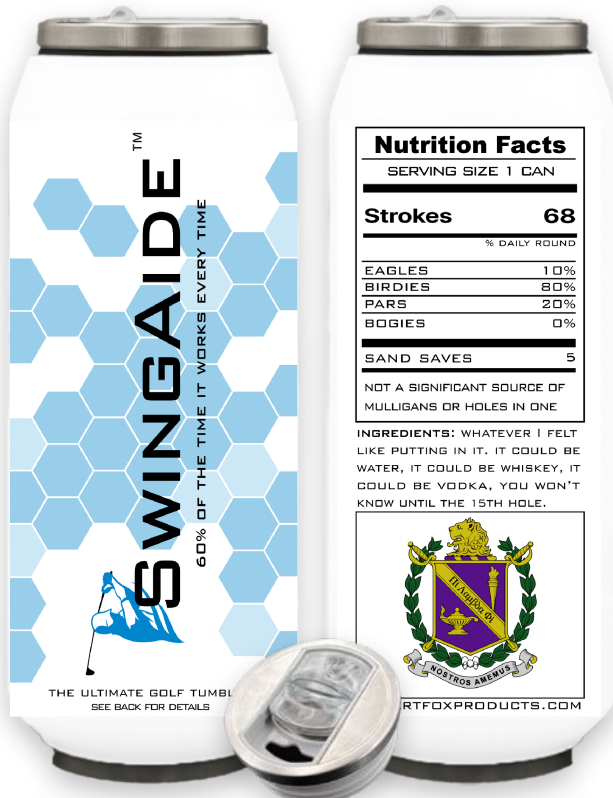


Nutrition Facts	
SERVING SIZE 1 CAN	
<b>Strokes</b>	<b>68</b>
% DAILY ROUND	
EAGLES	10%
BIRDIES	80%
PARS	20%
BOGIES	0%
<b>SAND SAVES</b>	<b>5</b>
NOT A SIGNIFICANT SOURCE OF MULLIGANS OR HOLES IN ONE	

INGREDIENTS: WHATEVER I FELT LIKE PUTTING IN IT. IT COULD BE WATER, IT COULD BE WHISKEY, IT COULD BE VODKA, YOU WON'T KNOW UNTIL THE 15TH HOLE.



DESERTFOXPRODUCTS.COM



Front

Back

## SwingAide Tumbler Details

Dimensions: 2.75" x 7.75" (D x H)

Artwork Area: 8.6" x 6.0" (W x H)



Any Color

# Tumbler Classic

## Tumbler Classic Artwork

SATISFYING YOUR THIRST  
FOR CUSTOMIZATION



MARKET YOUR  
MESSAGE IN STYLE

[ENJOY NOW](#)

SATISFYING YOUR THIRST  
FOR CUSTOMIZATION



MARKET YOUR  
MESSAGE IN STYLE

[ENJOY NOW](#)

### Nutrition Facts

SERVING SIZE 1 CAN

**Impressions** ∞

% OF MARKETING

CUSTOMIZATION 100%

BRANDING 100%

STYLE 100%

VERSATILITY 100%

**RESULTS** 6942

RECOMMENDED FOR THOSE WHO  
LOVE UNIQUE BRANDING.

INGREDIENTS: WITH DRINKAIDE,  
YOU GET MORE THAN JUST A TUM-  
BLER. OUR MISSION IS TO CREATE A  
PRODUCT THAT IS EFFICIENT, RELI-  
ABLE, AND FULLY CUSTOMIZABLE.  
WE AIM TO EXCEED YOUR EXPECTA-  
TIONS BY OFFERING A TUMBLER  
THAT COMBINES TOP-NOTCH INSU-  
LATION AND DURABILITY WITH THE  
ABILITY TO DISPLAY YOUR MARKET-  
ING MESSAGES PROUDLY.  
THE PERFECT DRINKWARE SOLU-  
TION FOR THOSE WHO VALUE BOTH  
PERFORMANCE AND PERSONALIZED  
MARKETING.

[DESERTFOXGOLF.COM](http://DESERTFOXGOLF.COM)



Front

Back

## Tumbler Classic Details

Dimensions: 2.75" x 7.75" (D x H)

Artwork Area: 8.6" x 6.0" (W x H)



Any Color