



DESERT
FOX
BRANDS

Customizable products
for golf and beyond.

DIGITAL PROOFS FOR



Desert Fox Brands includes Desert Fox Golf and Desert Fox Products to create purpose built, innovative products that enhance daily experiences. Our unique products and design support offer the perfect canvas for your brand story and delivered with a customer first mindset to ensure success.

DJ-10

WIRELESS GOLF SPEAKER

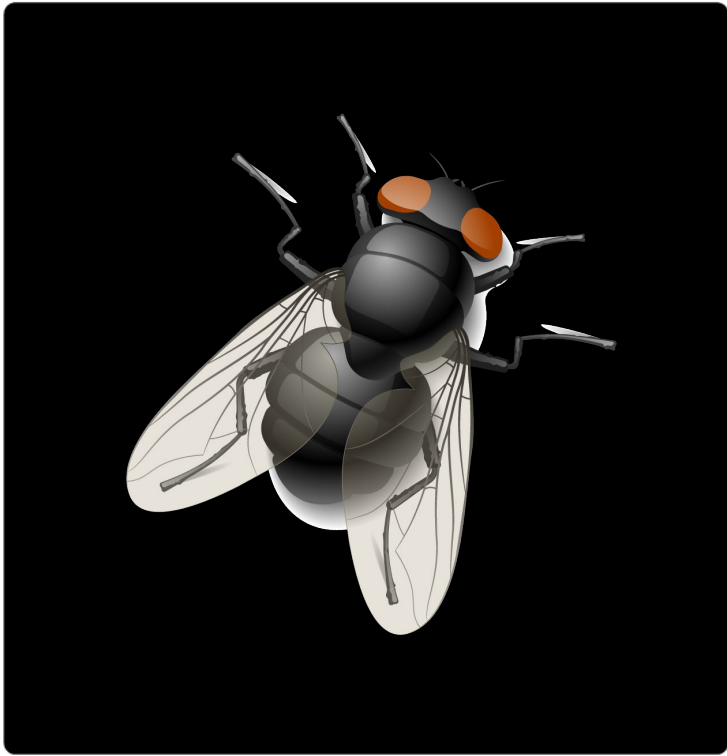


Great sound in a small package.
Built from the ground up for customization.

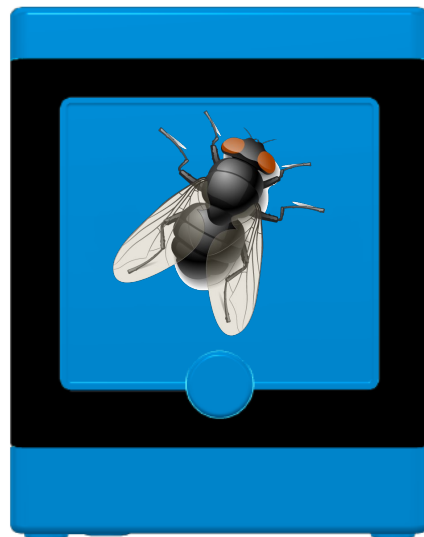
BUILT BY GOLFERS FOR GOLFERS

DJ-10 Speaker

Speaker Box



Speaker



New Colors Coming in July 2024

Speaker Box Details

*Dimensions: 4.1" x 4.3" (W x H)
Logo Area: 2.5" x 2.5" (W x H)*

Speaker Details

*Dimensions: 4.1" x 4.3" (W x H)
Logo Area: 2.2" x 2.1" (W x H)*

PHONE CADDY

THE BEST PHONE HOLDER FOR GOLF



Patented PhoneFIT™ Technology
Fits Vast Majority of Smart Phones

BUILT BY GOLFERS FOR GOLFERS

Phone Caddy

Wing

Faceplate

Wing



Faceplate Details

Logo Area: 2.1" x 2.3" (W x H)

Wing Details

Logo Area (x2): 0.8" x 2.75" (W x H)

Phone Caddy

Packaging Options: Choose One

Standard Bag

5.9" x 5.9" (W x H)

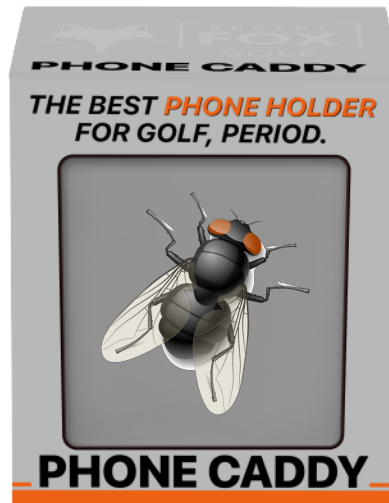
Logo Matches Phone Caddy Color



Retail Box

2.9" x 3.5" x 2.5" (W x H x D)

Clear front window



Custom Bag

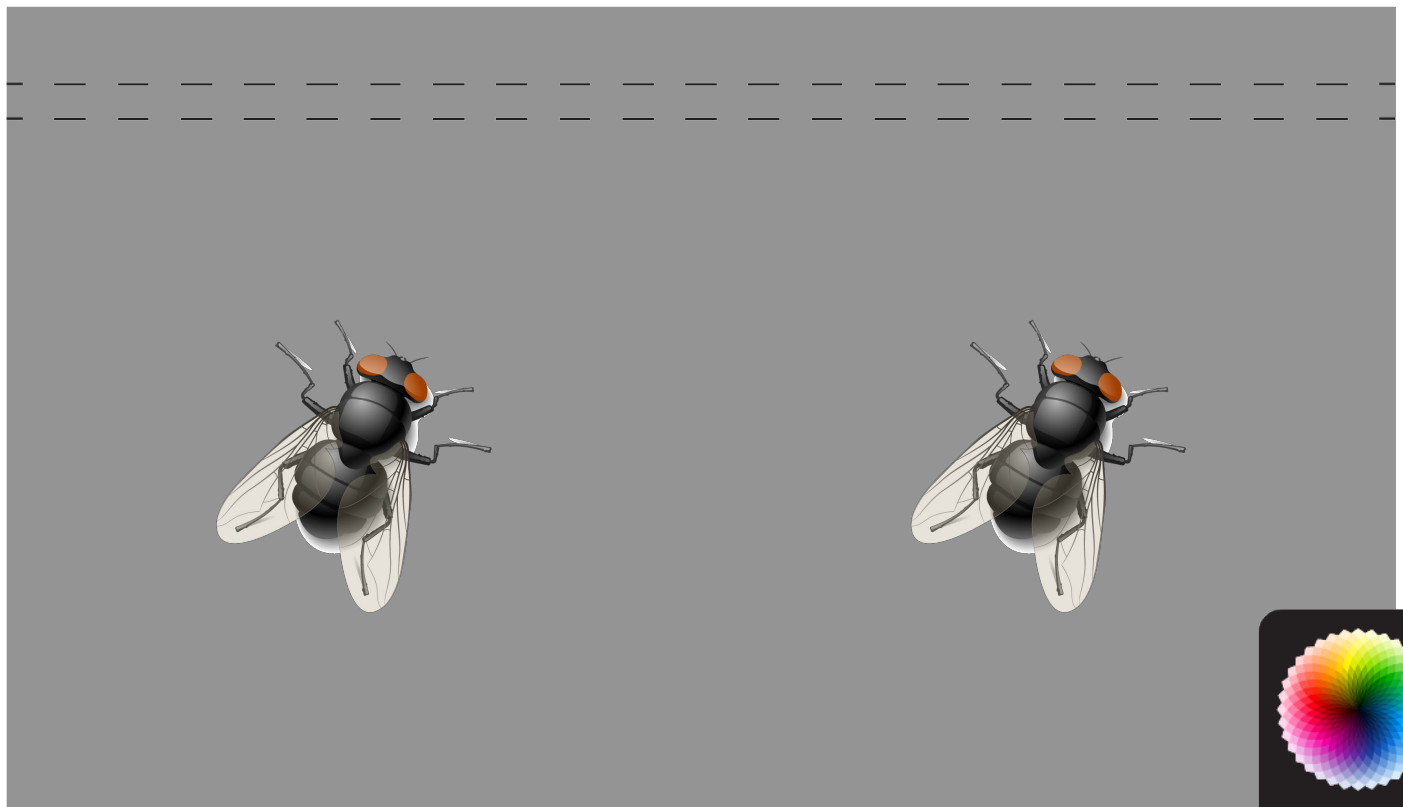
5.9" x 5.9" (W x H)

Logo Area: 4" x 4" (W x H)

Custom Color Available



Custom Bag



Front

Back



CUSTOM GOLF TOWELS

THE BEST TOWELS FOR GOLF



Cooling Towel

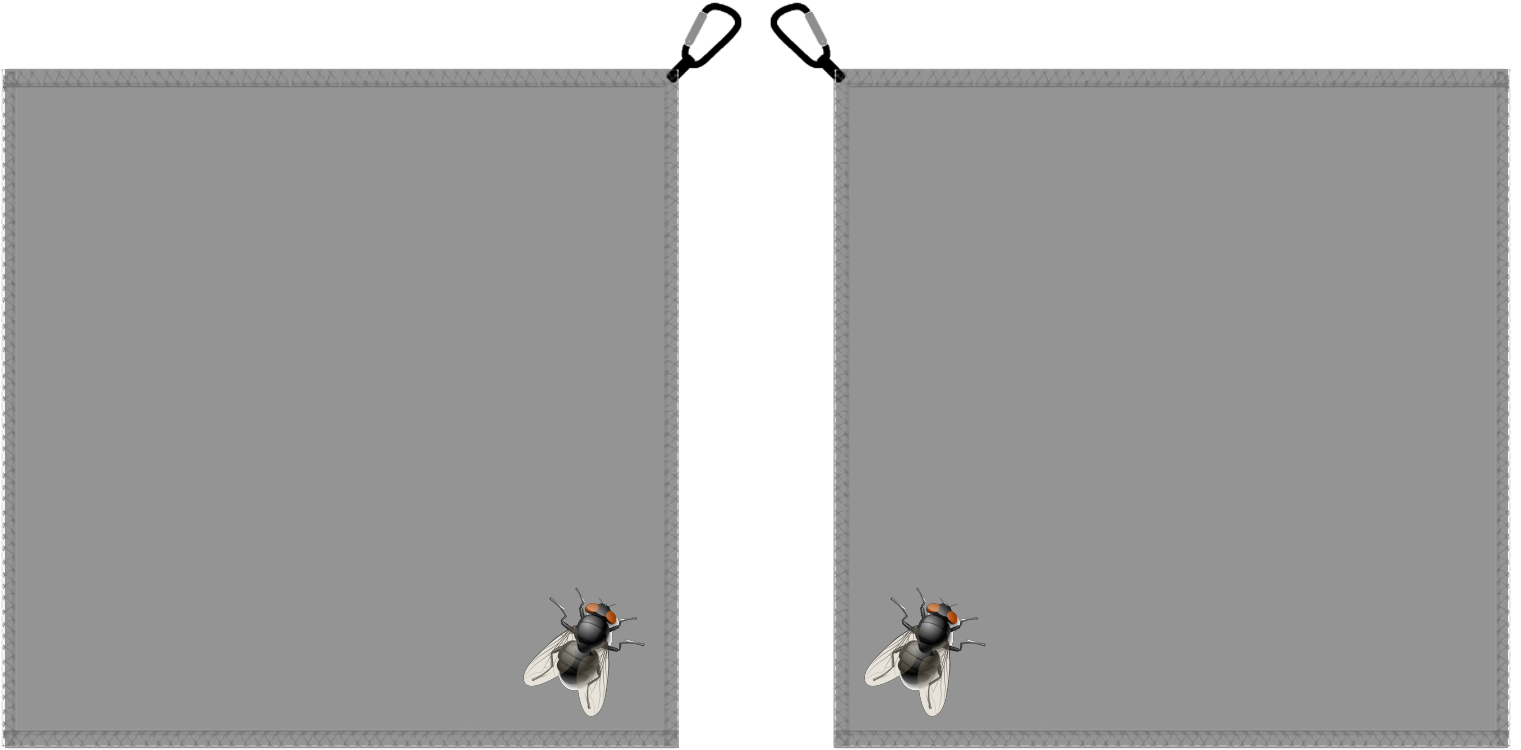
Golf Towel



KEEPING YOU COOL AND YOUR CLUBS CLEAN

Golf Towel

Golf Towel



Front

Back

Golf Towel Details

Dimensions: 16" x 16" (W x H)

Logo Area: 2.1" x 2.3" (W x H)

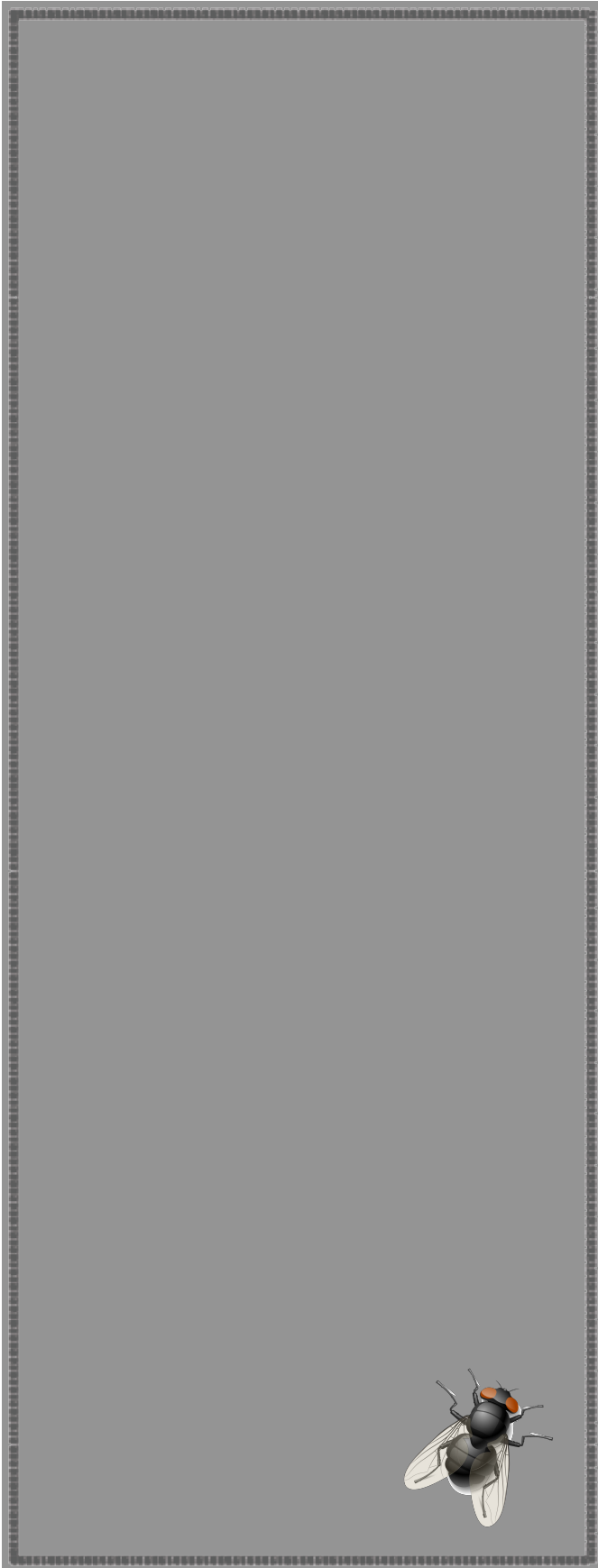
Towel color can be fully customized

Logo is placed on front and back in the corners to optimize viewing when hung from the golf bag.



Cooling Towel

Cooling Towel



Cooling Towel Details

Dimensions: 11.8" x 31.5" (W x H)

Logo Area: 2.1" x 2.3" (W x H)

Towel color can be fully customized

Logo is placed on lower right corner



GIFT BOX

ELEVATE YOUR GIFT-GIVING EXPERIENCE



CUSTOM PRINTED GIFT BOX

Custom Gift Box

Gift Box Artwork



Gift Box Details

Dimensions: 8.6" x 7.6" (W x H)

Logo Area: 6" x 6" (W x H)

Standard box color is Gloss White

Size may vary depending on items selected to go into the gift box

Additional custom colors available upon request for additional fee

DRINKAIDE

KEEP YOUR DRINK COOL IN STYLE



TUMBLERS & CAN COOLERS

Can Cooler Logo

Can Cooler Artwork



DESERT FOX GOLF • WWW.DESERTFOXGOLF.COM

Can Cooler Details

Dimensions: 2.75" x 4.25" (D x H)

Artwork Area: 8.6" x 2.25" (W x H)



Front



Back



Any Color

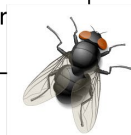
Can Cooler Classic

Can Cooler Artwork



AN EXPERIENCE UNLIKE ANY OTHER

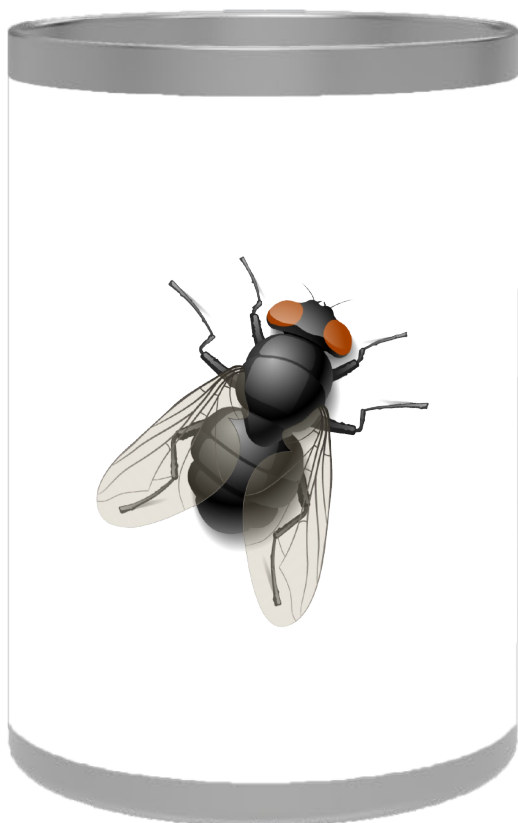
Hey, switch up this text with something cool about your company! This stainless steel can cooler isn't just unique—it's a prime spot to get your message out in a fun, memorable way. Use it to show off what makes your brand awesome!



Can Cooler Details

Dimensions: 2.75" x 4.25" (D x H)

Artwork Area: 8.6" x 2.25" (W x H)



Front

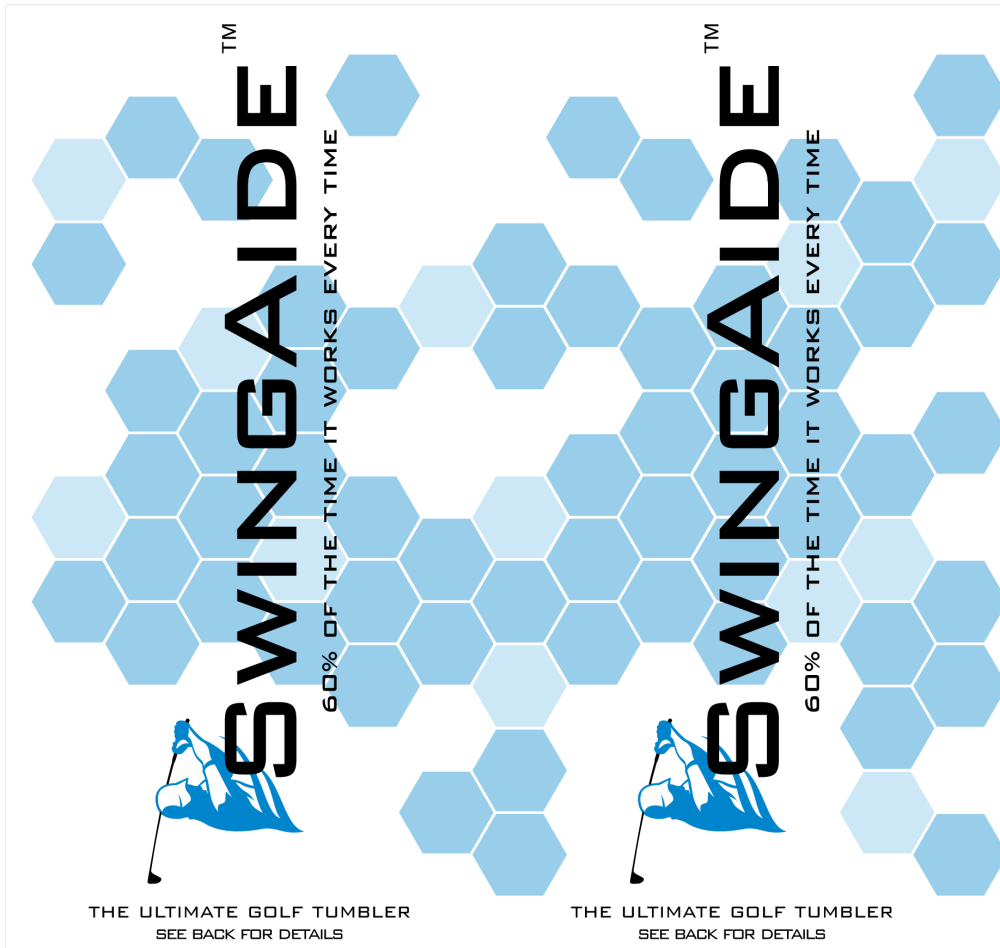


Back



SwingAide Tumbler

SwingAide Artwork



Nutrition Facts

SERVING SIZE 1 CAN

Strokes **68**

% DAILY ROUND

EAGLES 10%

BIRDIES 80%

PARS 20%

BOGIES 0%

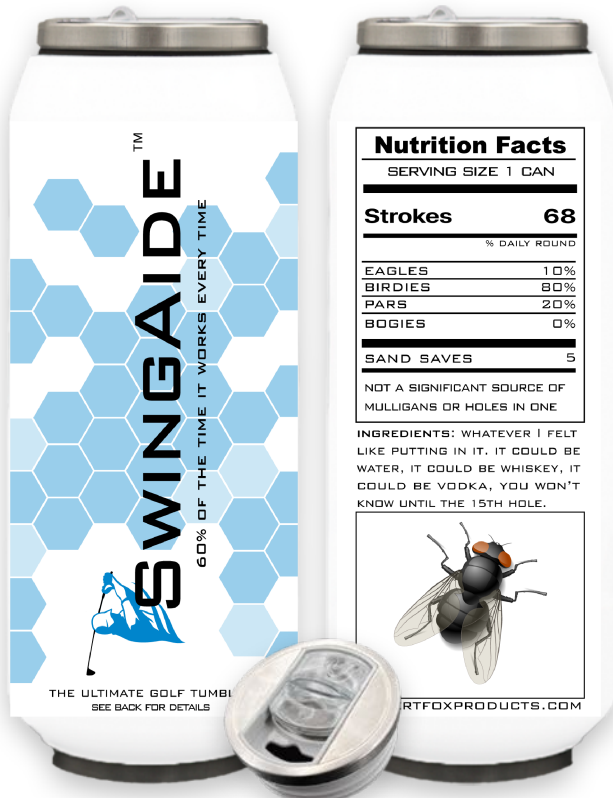
SAND SAVES **5**

NOT A SIGNIFICANT SOURCE OF MULLIGANS OR HOLES IN ONE

INGREDIENTS: WHATEVER I FELT LIKE PUTTING IN IT. IT COULD BE WATER, IT COULD BE WHISKEY, IT COULD BE VODKA, YOU WON'T KNOW UNTIL THE 15TH HOLE.



DESERTFOXPRODUCTS.COM



Front

Back

SwingAide Tumbler Details

Dimensions: 2.75" x 7.75" (D x H)

Artwork Area: 8.6" x 6.0" (W x H)



Any Color

Tumbler Classic

Tumbler Classic Artwork

**SATISFYING YOUR THIRST
FOR CUSTOMIZATION**



**MARKET YOUR
MESSAGE IN STYLE**

[ENJOY NOW](#)

**SATISFYING YOUR THIRST
FOR CUSTOMIZATION**



**MARKET YOUR
MESSAGE IN STYLE**

[ENJOY NOW](#)

Nutrition Facts

SERVING SIZE 1 CAN

Impressions ∞

% OF MARKETING

CUSTOMIZATION 100%

BRANDING 100%

STYLE 100%

VERSATILITY 100%

RESULTS 6942

RECOMMENDED FOR THOSE WHO
LOVE UNIQUE BRANDING.

INGREDIENTS: WITH DRINKAIDE,
YOU GET MORE THAN JUST A TUM-
BLER. OUR MISSION IS TO CREATE A
PRODUCT THAT IS EFFICIENT, RELI-
ABLE, AND FULLY CUSTOMIZABLE.
WE AIM TO EXCEED YOUR EXPECTA-
TIONS BY OFFERING A TUMBLER
THAT COMBINES TOP-NOTCH INSU-
LATION AND DURABILITY WITH THE
ABILITY TO DISPLAY YOUR MARKET-
ING MESSAGES PROUDLY.
THE PERFECT DRINKWARE SOLU-
TION FOR THOSE WHO VALUE BOTH
PERFORMANCE AND PERSONALIZED
MARKETING.

[DESERTFOXGOLF.COM](#)



Front

Back

Tumbler Classic Details

Dimensions: 2.75" x 7.75" (D x H)

Artwork Area: 8.6" x 6.0" (W x H)



Any Color